

Comparison Grid	CoolVision™	Other technologies
New conduits	X	X
Old conduits	X	X
Pipe Size	8 in - ...	6 in- 42 in
Measurement control	X	
Pre/post rehab for comparison measurements	X	
Precise calibration by triangulation Actual precision	0.25%	0.5%
Fixed optic system	X	
Standards	BNQ	WRC
Sophisticated telemetry	X	
Measurements taken per second	60,000	4,500
Points measured by profile	2000 points / profile	150 points / profile
History and data archives for comparison	X	
Number of passes required	1	2
Operation Time compare to CCTV	Same	Double
Can operate with up to 50% water level in the pipe	X	
Immediate video results?	X	X
Continuous data scanning	X	
External independant & objective professional data analysis center	X	
Trouble free Report Production Process	X	
Report and precise results available within 48 hrs	X	
User friendly and easy to operate	X	
Automatically generated data, operator tampering proof	X	
Report showing simultaneously results, video and graphs	X	
Interactive reports	X	

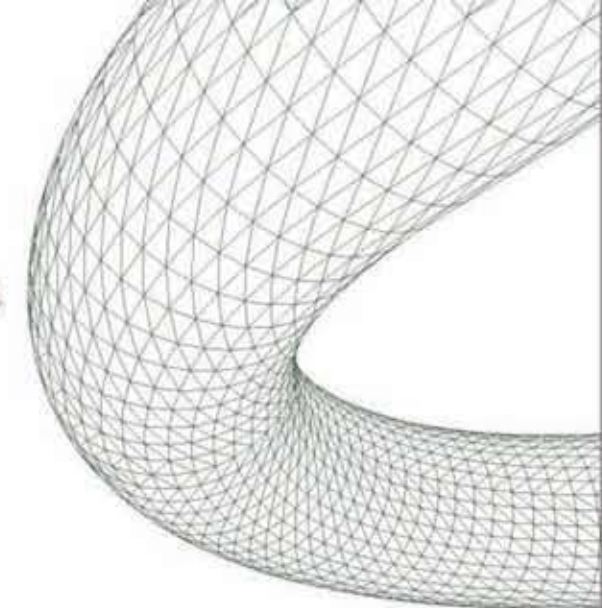
Your Authorized Dealer is:

Municipal Equipment Sales, Inc.

Mailing Address: PO Box 1233
Location: 208 Bell Place
Woodstock, GA 30188



Local: 770-928-0424
Fax: 770-928-7512
Nationwide Toll Free: **1-800-782-2243**
Email: sales@municipalequipment.com
Web: www.municipalequipment.com



3D Profiler

Make the right choice

A powerful new technology brought to you by C-TEC

Advanced technology:

CoolVision™ uses a fixed optical triangulation system consisting of a dedicated CCTV camera that is mechanically linked at a fixed position relative to the laser light. This results in a highly accurate data gathering system that is not subject to parallax, the orientation and dimensional vagaries of a snap-on laser probe and disassociated video sewer camera.

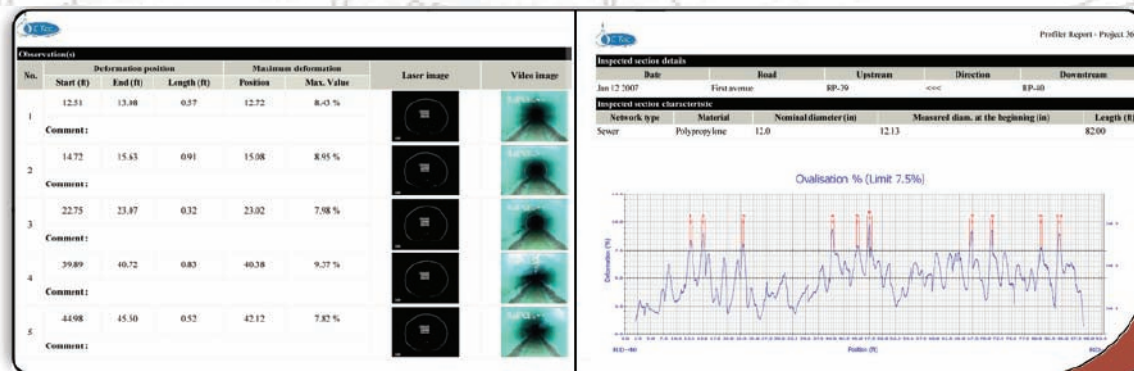
CoolVision™ is mounted on four stainless steel tracking wheels with two distance encoders. Because of its sophisticated telemetry system, *CoolVision™* needs only to be approximately centered in the pipe. The profiler is either pulled behind a pan and tilt camera tractor system concurrently taking profile readings and video survey or alternatively it can operate independent of the camera system and simply be pulled thru the pipe. In either case profile data is gathered and transmitted via the TV coaxial cable back to the survey ground station.

By recording and storing 2000 measurement points per laser profile and doing this 30 times per second, *CoolVision™* can recreate a complete 3D profile of the pipeline and measures observations with a 0,25% degree of precision. This capacity to create an accurate continuous record of the pipeline interior is what gives *CoolVision™* its edge over every other laser technologies.

Reliable results:

To gain acceptance, any inspection technology must provide results that are accurate, reliable and easy to understand.

CoolVision-3D Viewer™ is a superior software which combines the video and laser information to create a tri-dimensional profile of the inspected pipeline. The way the results are presented also plays an important role. This is why C-Tec is coordinating the data processing, so that the information is always structured in the same manner, no matter who does the actual field work.

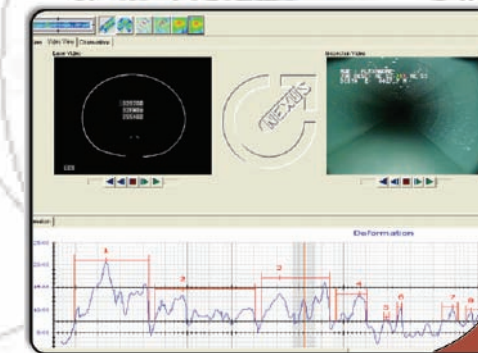


Comprehensive written reports:

In addition to the interactive report, all the information is also available in written reports which include a summary of all detected problems. These reports will allow easy location of any defective sectors with clear references for all of them.

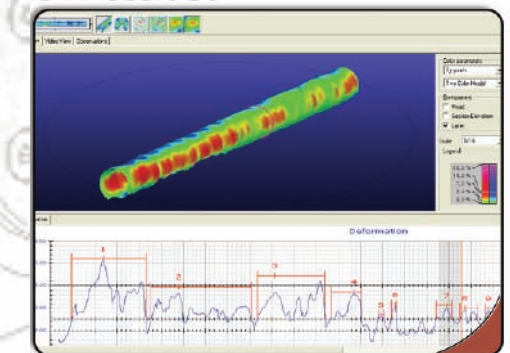
Profile to video link:

Switch from the 3-D profile to the video image with a single mouse click.



3-D profile

Get a feel for the actual state of the inspected segment with a simple glance at its 3-D profile.



Strategic applications:

Thermoplastic pipe deflection measurement:

- Precise measurement of deflection
- Specified in the province of Quebec standardized construction specifications

Quality control of water and sewer rehabilitation:

- Precise measurements before and after rehabilitation process
- Thickness measurement of the coating applied
- Better design knowing the exact state of the pipe's interior

Diagnosis of existing sewer systems:

- 3-D profile and slope of inspected segments
- Precise measurement of all anomalies detected
- Facilitated design decisions
- Creation of an inspection program and follow up of the state of your system through the years

