

www.posm.us

# POSM

PIPELINE OBSERVATION SYSTEM MANAGEMENT

## Municipal Video Data Collection Software

Current Session: #2 Name: Demo

File Edit Tools

S-416 TO S-417  
06/15/2007 US 17 North 12:00:46 PM

0.81 Inch Measurement  
FT 6.4 FPM 0

Generate Report Show Comments Full Screen Print Snap Shot Observation Code Editor

Posm Measurement  
Pixel Length: 247.02  
Calibrate Value: 304.63  
Calibrated Length: 0.81  
Enter Length of Targets  
Clear Line 1.47

Darim Mpeg  
Status: Record  
Pause Preview  
Video Audio

Observation Data Distance  
General Observation 5.5  
Water Level 0  
Manhole 0

AMH MWL TFA 9 TFA 2 CL  
B RBB JSM MGO MSA

JSM - Joint Separated Medium Observation

Continuous  
Remarks  
.81 Inch Measurement  
Struct Weight 1

Add Observation  
Take Picture  
Take Clip  
Long Clip

Distance 6.4 Session Size 660 KB Speed 0

Stop Session Set Exit

### Create Interactive Reports

PO Number: YOTV0506E  
Date: 5/10/2006 1:30:00 PM  
Street: 18631 Altario St  
Total Distance: 350.4  
Run Number:  
Upstream MH: 0039-2304  
Downstream MH: 0032-2304  
Direction of Survey: Downstream

TFA - Tap Factory Active  
Distance: 7.2 Position: 3  
Percent: 0  
1st Dimension: 4 2nd Dimension: 0  
VCR Time: 01:49:02 Mpeg Time: 03:41

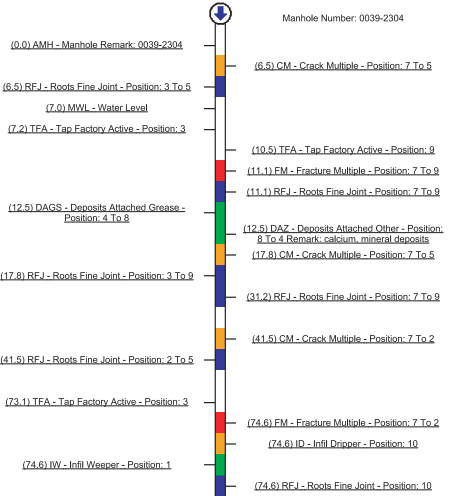
TFA - Tap Factory Active  
Distance: 10.5 Position: 9  
Percent: 0  
1st Dimension: 4 2nd Dimension: 0  
VCR Time: 01:49:34 Mpeg Time: 04:13

FM - Fracture Multiple  
Distance: 11.1 Position: 7 To 9  
Percent: 0  
2nd Dimension: 0  
VCR Time: 01:50:21 Mpeg Time: 05:00

RFJ - Roots Fine Joint  
Distance: 11.1 Position: 7 To 9  
Percent: 0  
2nd Dimension: 0  
VCR Time: 01:50:44 Mpeg Time: 05:23

PO Number: YOTV0506E  
Date: 5/10/2006 1:30:00 PM  
Street: 18631 Altario St  
Total Distance: 350.4  
Run Number:  
Height (Diameter): 8  
Pipe Segment Reference: 97433  
Upstream MH: 0039-2304  
Downstream MH: 0032-2304  
Direction of Survey: Downstream  
Material: Vitrified Clay Pipe

Severity  
Light  
Moderate  
Average  
Heavy  
Severe



View more sample reports and download POSM for evaluation online at [www.posm.us](http://www.posm.us)

- Integrated CD/DVD burning
- Data interface shows only needed fields
- Summarize projects with one report
- Store data with Access or SQL Databases
- Captures inclination data for slope plots
- Create custom header, data entry and observations
- Large easy to read screens and color coded buttons and labels
- Find Observation Codes quickly with HotButtons and Drop Down Filters
- Export collected data to GIS including PACP scores and report links
- Create interactive maps that link to POSM HTML inspection reports
- Built in database search and filtering for report generation
- All reports stored in HTML for viewing on CD/DVD or networks
- Create playable DVDs with menus for TV DVD players
- Captures pictures, short clips, and MPEG 1, 2, or 4 whole run video simultaneously
- Compatible with NASSCO PACP/MACP, Hansen, GBA Master Series and RJN Cass Works
- Custom database import / export programming available
- Transfer data between field units, office and server quickly and easily

Session Information

Information Manhole Pipe Misc Custom Pacp 6 GIS

Flow Control: N - Not Controlled  
Media Label: Demo01  
Purpose: F - Routine Assessment  
Sewer Category: J - Jetting  
Pre-Cleaning: J - Jetting  
Date Cleaned: 02/06/2007 14:21  
Weather: 4 - Snow  
Location Code: B - Main Highway - Suburban  
Additional Info: C - Light Highway  
Location Details: D - Encasement/Right of Way  
E - Woods  
F - Sidewalk  
G - Parking Lot  
H - Alley  
I - Ditch

Select Template: NASSCO Pacp

Cancel Session Edit Quick Fill All Save Information and Return to Intro Save Information and Start Inspection

NASSCO  
PACP / MACP  
Certified Software



# RS Technical Services Inc.

1327 Clegg St. \ Petaluma, CA 94954  
Phone: 707-778-1974 \ 1-800-767-1974 \ Fax: 707-778-1981  
Web: [www.posm.us](http://www.posm.us) \ Email: [info@posm.us](mailto:info@posm.us)

# the TOUCH SCREEN VERSION of POSM

PIPELINE OBSERVATION SYSTEM MANAGEMENT

www.posm.us // info@posm.us

Posm Lite Version: 1.0.67 55274-0EM-0050261-58380

5  
9/23/2005 RST DEMO 14:12

FT 75.8 FPM 0

Observation	Distance
Lateral Left	69.5
Start Inspection	6

SI LL LR I R  
C G S B EI

LR - Lateral Right

At / From To Severity  
3

Remarks Scale Buildup

Add Observation  Take Picture

New Session Quick Fill Session Manager Print Report Screen Keys Display Header Edit Comments Set Distance Distance 75.8

Project Name RST Demo Start ID 5 Pipe 8"

Date 9/23/2005 2:06:00 PM End ID Type VCP

Location Direction Downstream Index

Overlay Setup VCR Setup Code Setup Video Setup Clear Overlay Full Screen English Español Show VCR Controls Exit

75.8	Observation LR - Lateral Right Position: 3 Severity: None Remarks: Scale Buildup	Session 00:00:00 VCR DVD 00:05:39	
84.7	Observation R - Right Position: 2 To 6 Severity: Moderate Remarks:	Session 00:00:00 VCR DVD 00:07:37	

Back Show Header Show Time Show Footage Show Picture Print Show Observation Exit

- Simplified Interface for easy data entry
- Available in English or Spanish
- Microsoft Access database storage
- Large buttons and fonts for Touch Screen use
- Live on screen video
- BMP or JPEG picture capture
- Video text overlay with footage counter
- JVC RS232 DVD / VCR communication
- Nine header entry and one comment memo fields
- Create custom observation codes
- Quick observation code lookup with user defined Hot Buttons
- Ability to add clock position, severity and Remarks for each observation
- Print single or multiple reports quickly with text and observation pictures
- Save HTML reports, Microsoft Access database, and pictures to CD or DVD
- Ability to import data to full POSM

HTML Reports with Pictures

Your Authorized Dealer is:

**Municipal Equipment Sales, Inc.**

Mailing Address: PO Box 1233  
Location: 208 Bell Place  
Woodstock, GA 30188

Local: 770-928-0424  
Fax: 770-928-7512  
Nationwide Toll Free: 1-800-782-2243  
Email: sales@municipalequipment.com  
Web: www.municipalequipment.com

