



MODEL RS-3 LIGHTNING LOADER®



Continuous Loading! Never Leave the Route!

- For high volume route loading
- Great for hurricane/emergency cleanup
- Loads into separate haul vehicles from a single lane.
- Drive and load from upper cab
- Suspension locks add stability
- Over 700 cities & counties use Lightning Loaders, as well as most of the major waste companies, and many tree care and debris removal services
- Duty cycle rated
- Proved effectiveness and endurance since it's introduction to the market in 1997



Climate controlled operator cab includes all driving controls plus twin joysticks for loader operation



Saves time because outriggers not needed for most loads



Rear Steer can load in narrow alleyways where standard grapple trucks won't fit

**THE INDUSTRY STANDARD SINCE 1979
EFFICIENT! VERSATILE! AFFORDABLE!**

Lightning Loader®

Specifications and Technical Data

1/00

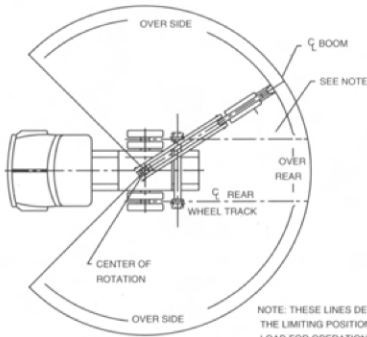


FIG. 1 - LOADER ON TIRES

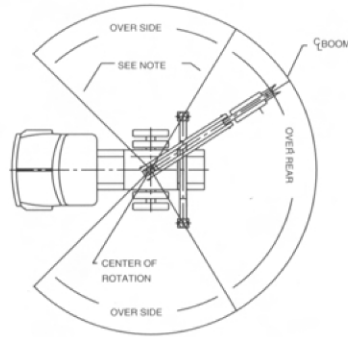
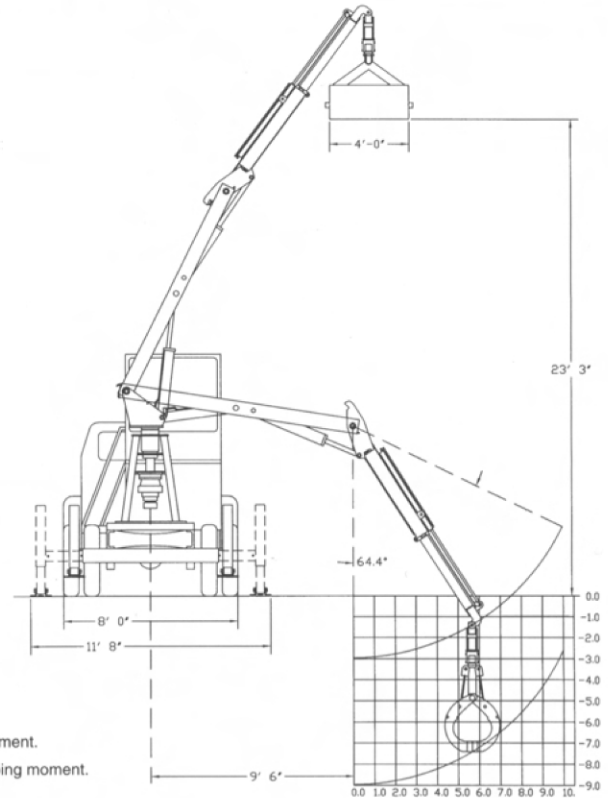


FIG. 2 - LOADER ON OUTRIGGERS



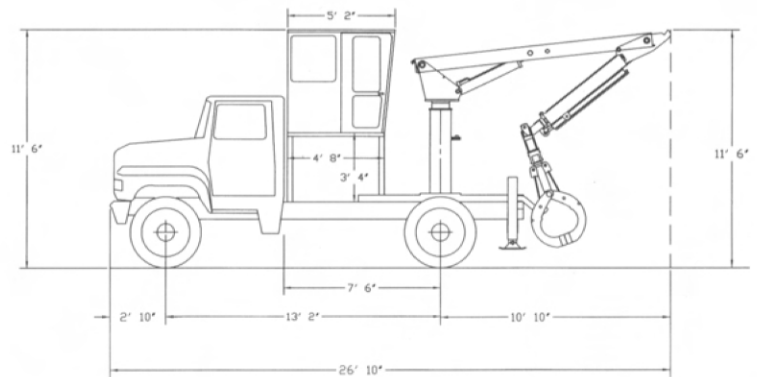
MODEL RS 3				
RADIUS	RUBBER TIRES (**)		OUTRIGGERS EXTENDED	
	OVER SIDE	OVER REAR	OVER SIDE	OVER REAR
10	4290 lbs	5475 lbs	5916 lbs	7960 lbs
16	1789 lbs	3053 lbs	3026 lbs	4960 lbs
20	1433 lbs	2580 lbs	2261 lbs	4100 lbs

Notes:

- Weight of attachment to be subtracted from lift capacities. Standard Trash bucket weighs 960 lbs.
- Radii are measured in feet from the center of rotation to the center of the bucket.
- Safe working load with outriggers extended and machine on firm level ground do not exceed 85% of vehicle tipping moment.
- ** Safe working load with outriggers retracted and machine on tires with level ground do not exceed 75% of vehicle tipping moment.

General

Reach (From Centerline Rotation)	20 feet
Main Boom and Tip Boom	16 feet
Tip Extension	4 feet
Tare Weight (Empty)	21,920 lbs
Front Axle Weight	5,340 lbs
Rear Axle Weight	16,580 lbs
Outrigger Span	11' 8"
Storage Height	11' 6"



Bucket Features

All-purpose clamshell design, 4 feet wide with an opened width of 5 feet for large bites. High impact tempered steel used on bucket cutting edges for extended life. Reverse curve shape helps prevent scalping of lawns. Continuous rotation. No hoses below the bucket rotator.

Chassis Specification

Body Style	Conventional Cab
Cab-to-Axle Dimension	90"
Front Axle Rating	10,000 lbs
Rear Axle Rating	21,000 lbs
Gross Vehicle Weight Rating	31,000 lbs
Frame	1,500,000 RBM
Engine	210 HP Diesel
Transmission	World 3060P

Performance

Productivity increased by not needing to stow bucket between route stops. Two six function mechanical joysticks reduce maintenance compared to traditional designs. Tandem pump allows multiple loader functions without power loss. When loading, travel speed is restricted. When traveling, loader movements are restricted.

Structural

A-frame pedestal design allows flexing under repeated load shocks. Replaceable Cast Nylon bushings used in head assembly. Head assembly is stress relieved. Reinforced connection points with hardened pins and replaceable bushings. Safety locking valves used on boom and outrigger cylinders.



Petersen Industries, Inc.

Your Authorized Dealer is:

Municipal Equipment Sales, Inc.

Mailing Address: PO Box 1233
 Location: 208 Bell Place
 Woodstock, GA 30188

Local: 770-928-0424
 Fax: 770-928-7512
 Nationwide Toll Free: 1-800-782-2243
 Email: sales@municipalequipment.com
 Web: www.municipalequipment.com

